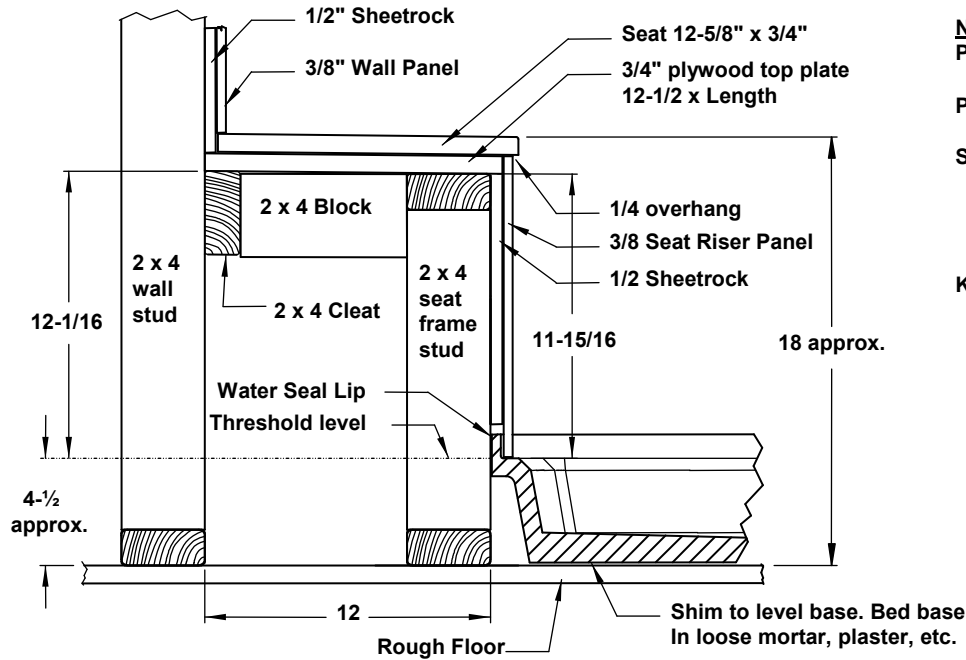


BENCH SEAT / KNEE WALL DETAILS

Construction Details - Bench Seat / Knee Wall



NOTES:

Provide 1/16" gap between all **TERE-STONE** parts.

Provide Approx. 1/2" gap between Water Seal Lip and sheetrock.

Seat:

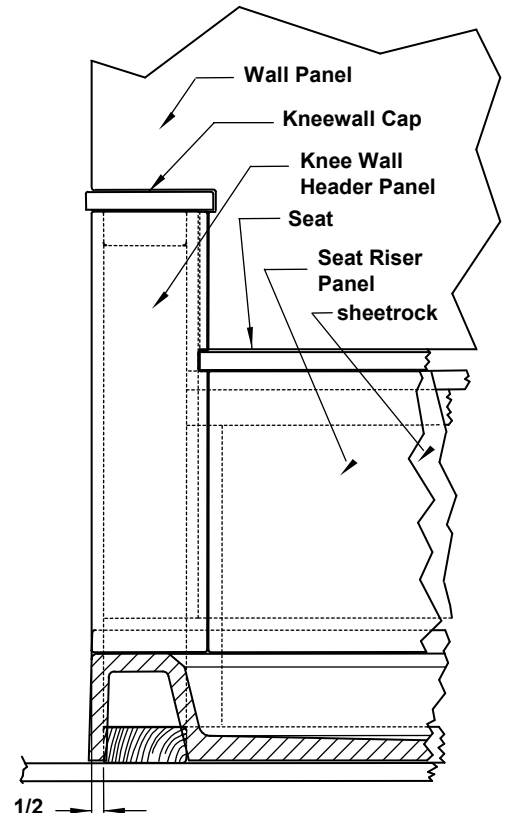
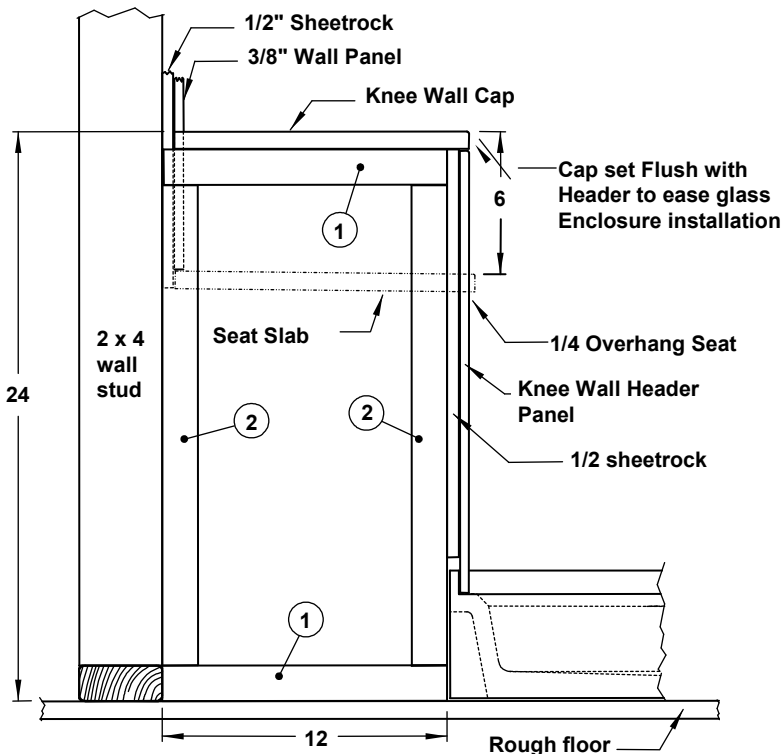
Pitch seat 1/8"/ft. toward base.
Seat studs on 10 to 16" centers.
Nail 2 x 4 Cleat to wall studs to Support back of seat.

Knee Wall:

Build frame with 2 x 4's
Item #1. (2) boards 12" long
Item #2. (2) boards 20-1/4" long.
Fasten to floor and wall studs.
Bond Knee Wall Cap to frame top with silicone. Cap should be flush with Knee Wall Header panel and equal overhang inside and out.

Bench Seat Detail

Front View



Knee Wall Detail

Front View

Knee Wall Detail

Side View

NOTE

Base and Walls are cast products and, as such, variations in finish dimensions will occur - Normal Tolerance +/- 1/4"